



The Boardwalk Accessibility Guide

A caring, creative and life-enriching space where connections are made and lives are transformed.

The Boardwalk
105 Brunswick Street
Glasgow
G1 1TF

Email: venuehire@impactarts.co.uk

Website: www.theboardwalkglasgow.co.uk

Tel: 0141 575 3001

Opening hours

Open all week: 9am – 9pm (The building can be opened earlier and kept open later where required to accommodate bookings)

What 3 Words

<https://w3w.co/bath.drive.rocky>

Grid Ref: NS5943765191

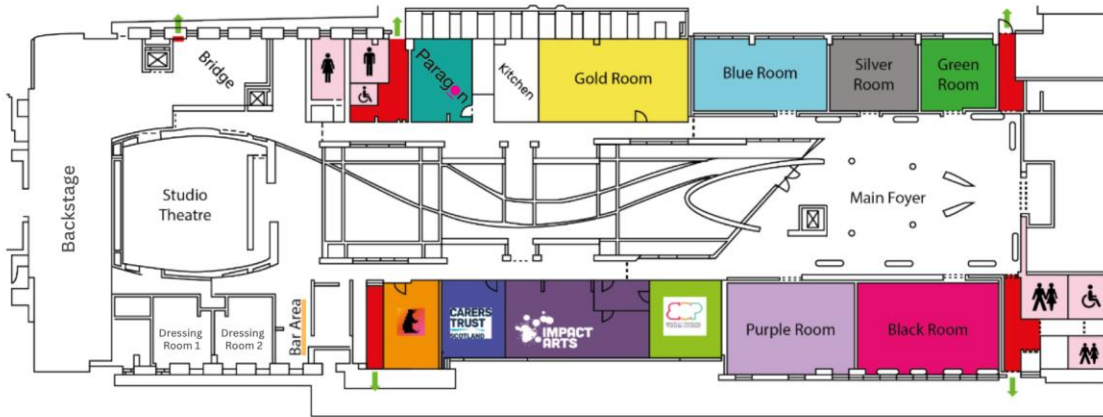
CONTENTS

- [About The Boardwalk](#)
 - [Location](#)
- [Travel Information](#)
- [Main Entrance](#)
- [Main Foyer](#)
 - [Toilets](#)
- [Our Studios](#)
- [Left Corridor](#)
- [Right Corridor](#)
 - [Toilets](#)
- [Brian Cox Studio Theatre](#)
 - [Backstage](#)
- [Ground & First Floor](#)
- [Courtyard](#)
- [List of Measurements](#)

The Boardwalk Floorplan

Building Plan

The Boardwalk, 105 Brunswick Street
Glasgow, G1 1TF



Key:

Toilets (Male)		Impact Arts Office		Paragon		Green Room	
Toilets (Female)		Solar Bear Office		Gold Room		Black Room	
Toilets (Accessible)		Birds of Paradise Office		Blue Room		Purple Room	
Toilets (Gender Neutral)		Carers Trust Office		Silver Room		Fire Exit	

About The Boardwalk

The Boardwalk is a vibrant and creative events venue in the heart of Glasgow’s Merchant City, which offers a variety of meeting, performance, studio, and event spaces for hire. The Boardwalk is managed by an innovative arts charity, Impact Arts. As well as providing space for Impact Arts’ own Glasgow-based programmes, external events hire at The Boardwalk strengthen Impact Arts’ ability to fulfil their social purpose: to transform lives through creativity, address poverty, and tackle inequalities.

The venue offers flexible spaces, from a 120-capacity theatre to 7 studios and meeting rooms. With capacities ranging from 10-90 people, it is suitable for a range of activities including corporate events, conferences, dance rehearsals, creative workshops, theatre performances, and many more.

The Boardwalk is a lower floor venue, where most of its spaces are at lower floor level. There are three lifts within the premises, further details for which are outlined below. The main entrance is at street level, via a walkway in between Brunswick Street and Hutcheson Street. There is a reception space at street level, followed by stairs or a lift to gain access to the lower floor.

The lower floor has a large foyer; the Green, Silver, Blue, Gold, Purple Rooms and Black Studio; catering kitchen; two sets of toilets including two accessible toilets; two Impact Arts' offices; Solar Bear's office; Birds of Paradise's office; The Carer's Trust office; courtyard; a conference room; staff room/kitchen; The Boardwalk Theatre; a backstage area; a wardrobe/workshop area; two technical storage spaces; two dressing rooms with two toilets and two showers in each (one accessible toilet and shower room in each).

Backstage, there is a goods lift which provides access to street level. To the right of the entrance to The Boardwalk Theatre, there is access to the ground and first floor via a lift or staircase. On the ground floor, there is a tech box and access to the gallery walkway. On the first floor, there is an additional gallery walkway as well as a desk space. Flooring surfaces vary throughout the premises, but floors are even and level with minimal resistance or obstacles.

This document describes the layout of the building, providing information on measurements and features. Please note that all the doors have a height of 202cm, unless stated otherwise.

We care deeply about making our building as accessible as possible and are committed to continual improvement. We actively seek funding opportunities to enable accessibility upgrades throughout The Boardwalk and we truly value customer feedback on how we can best accommodate a range of access needs.

If you have any questions, suggestions, or requests, please get in touch. We'll always do our best to support you, and we warmly welcome any feedback you may have about the building and its accessibility as this enables us to make The Boardwalk a welcoming, inclusive, and vibrant arts space for all.

Image of showing between Hutcheson front reception courtyard

Location

The situated Hutcheson Brunswick free access middle of a

Across of the walkway is:

- Hutcheson St – Brewdog
- Brunswick St – Brunswick Hotel



The Boardwalk, the walkway Brunswick and Street, the doors to the (left) and below.

Boardwalk is between Street and Street. Step- is gained in the walkway.

from each end



Walkway to The Boardwalk (Hutcheson



Walkway to The Boardwalk (Brunswick



Opposite the walkway to The Boardwalk
(Hutcheson Street)



Opposite the walkway to The Boardwalk
(Brunswick Street)

Travel Information

Closest Bus Stops

There are several bus stops and routes in the area:

- Garth Street: 6, 7, 7A, 21, 75, 267, N267

- John Street: 21
- Wilson Street: 6, 18, 21, 240 Lanarkshire connect, 255, 263, 267, CB1
- Trongate: 2, 18, 60, 60A, 61, 240 Lanarkshire connect, 255, 263, CB4, N240
- Stockwell Street: 2, 60, 60A, 61, 64
- Candleriggs: 2, 18, 60, 60A, 61, 64, 240 Lanarkshire connect, 255, 263, CB4, N240
- Ingram Street: 1 theOne, 1A theOne, 1B theOne, 1C theOne, 1D theOne, 1E theOne, 2, 6, 7, 7A, 18, 21, 60, 60A, 61, 75, 240 Lanarkshire connect, 255, 263, 267, N240, N267, X4

Nearest Train Stations

- Argyle Street
- High Street
- Glasgow Queen Street

Nearest Subway Stations

- Buchanan Street
- St. Enoch

Parking

- NCP Glasgow Ingram Street (0 Disabled Bays)
- NCP Glasgow The Glasshouse (4 Disabled Bays)
- NCP Glasgow George Street (2 Disabled Bays)
- There is limited on-street parking in the surrounding area.

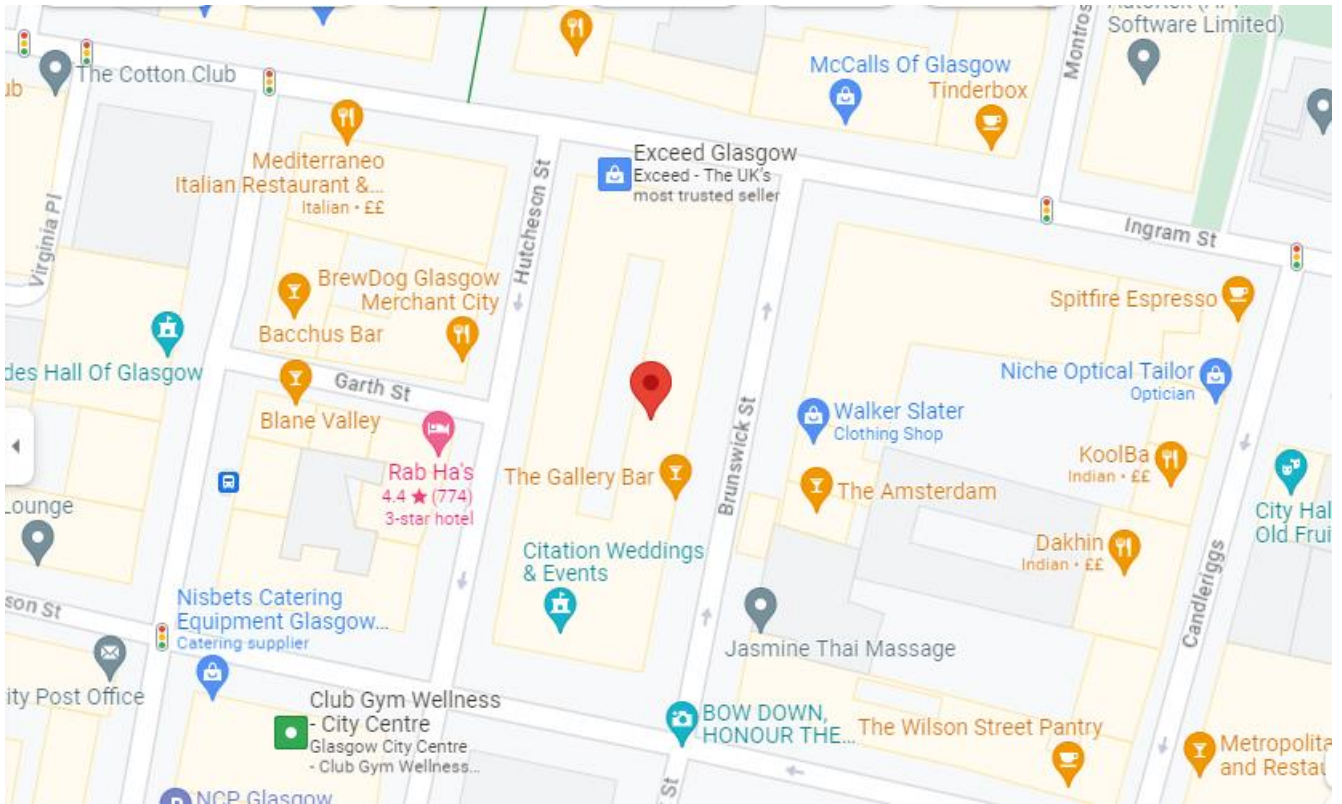
Glasgow Taxis

All Glasgow Taxis' vehicles are wheelchair accessible with visual and hearing assistance.

<https://www.glasgowtaxis.co.uk/about-us/disabled-access/>

Tel. +44 (0)141 429 7070

Map



<https://maps.app.goo.gl/ZYjcX59P9UUx93Kd7>

Main Entrance

The entrance to the building is from a covered walkway between Brunswick Street and Hutcheson Street, through double doors. The main door to reception is a glass double door and opens inwardly. It is 168cm wide. These doors are locked from the outside and require a member of staff to grant access via a simple entry system. There is a buzzer to the left of the double doors to alert a member of staff to your arrival. The buzzer is set in the centre of a metal frame, on a metal banister roughly 1 meter from the ground.

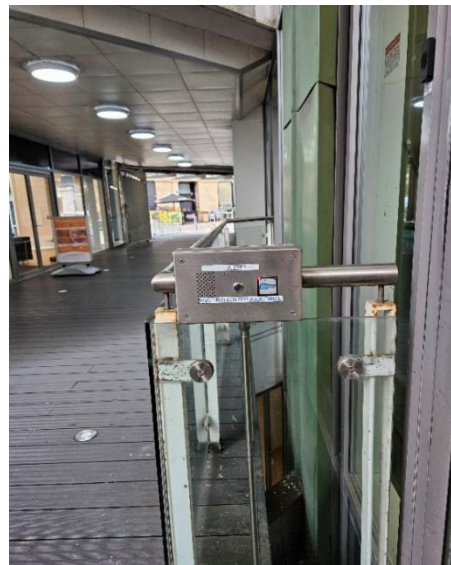
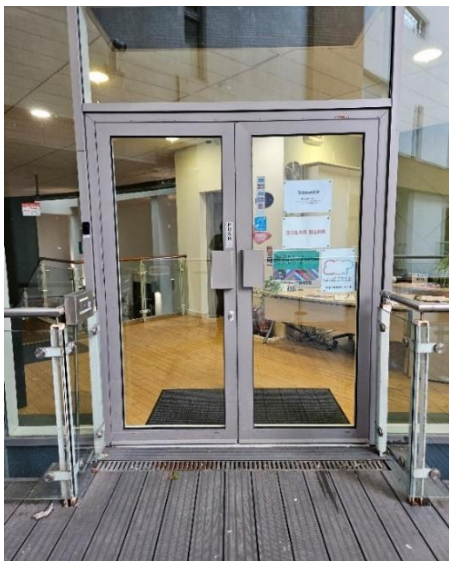
Reception

Upon arrival at The Boardwalk, guests will be greeted by a member of The Boardwalk staff who will be on hand to guide you to the correct room and provide any assistance.

The reception and main foyer are well lit with daylight and overhead bulb lighting. There is smooth wooden flooring throughout the reception. There are two large doormats at reception, one at the entrance and one ahead of the staircase.

The reception and main foyer can be noisy when the building is particularly busy or if the foyer has been hired for an event. Noise levels vary throughout the building. Please ask a member of staff if you would like additional information on noise levels and quiet spaces during an event hire or visit.

You can use the lift or take the 21 steps from the reception down to the main foyer. There are wooden banisters on either side of the stairs. From the main foyer, guests can get to any of the spaces The Boardwalk has to offer.



Reception Lift

The entrance to the lift is 78cm wide and 200cm in height. The inside is 142cm wide and 110cm deep. There is a half-length mirror at the back of the lift and metal handrails on the 3 internal lift walls. The space is well lit, and the lift controls feature raised lettering and symbols. The lift also features audio warnings 'doors opening' and 'doors closing'. The doors close quite quickly.





View of reception from the entrance



Main Foyer

From the main foyer area, you can gain direct access to the catering area, toilets and 5 of our studio spaces:

- **Black Studio**
- **Purple Room**
- **Green Room**
- **Silver Room**



Main Foyer

- **Blue Room**

The foyer is a well-lit space. There are 9 large white floor-to-ceiling pillars in the foyer, bulb lighting as well as some daylight via skylights. There are various works of art on the walls.

There are plenty of places to sit and relax in the foyer, with a range of seating options. There are low, purple square shaped seats with low black coffee tables, bleaches style seating and standard chairs around a large round table. Please note that arrangement of chairs and tables in the foyer may differ from this description

depending on event bookings. If you would like to discuss the setup of the foyer at the time of your visit, please get in touch.

There are also permanent, enclosed spaces or 'work pods' in the foyer for a more private space for meetings, discussions and quiet working.

The flooring is mostly wooden, with some tiled flooring. There is a slight bump where the tiles and wooden floor are joined.

Toilets (via Main Foyer)

On the basement level, there are toilets on the far side corner accessed from the main foyer. There are two sets of toilets: one with cubicles only and one with urinals and cubicles; and an accessible toilet. These are identified with written signage.

From the foyer, there is a door to a hallway that leads to the toilets.

The door from the foyer towards the toilet opens inwardly and is 86cm wide.

Gender Neutral – Cubicles Only

From within the hallway, on the lefthand side, there are two doors to the gender-neutral cubicle toilets. They both open inwardly and both are 77cm wide.

The cubicle only toilet contains:

- 7 cubicle stalls (First 3 currently out of order)
- 7 sinks
- 1 hand dryer
- Hand towels and sanitary products

The cubicles at The Boardwalk have a door width of 54cm. From inside the cubicle, the width is 80cm.

Gender Neutral – Urinals & Cubicles

From the hallway, there are two doors to the urinal/cubicle toilets. They both open inwardly and are both 77cm wide.

The urinal/cubicle toilet contains:

- 3 cubicles
- 4 urinals
- 7 sinks
- 1 hand dryer

Accessible Toilet

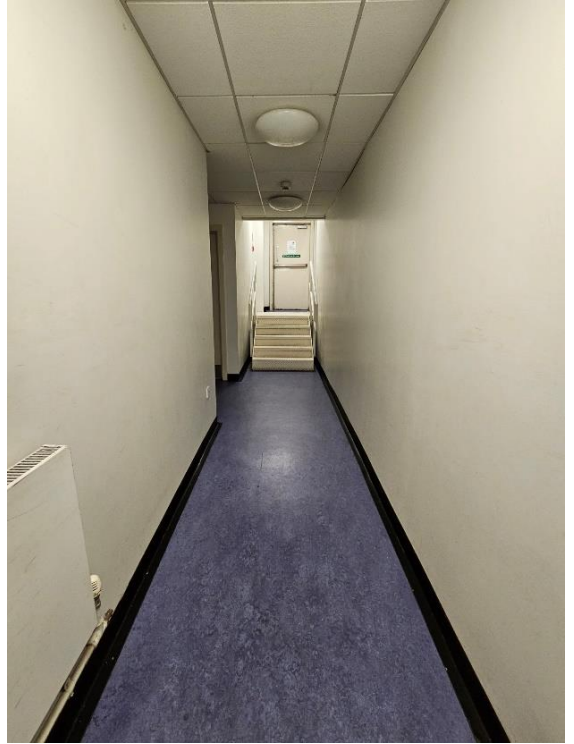
From the hallway, there is one door to the accessible toilet. It opens outwardly and is 88cm wide.

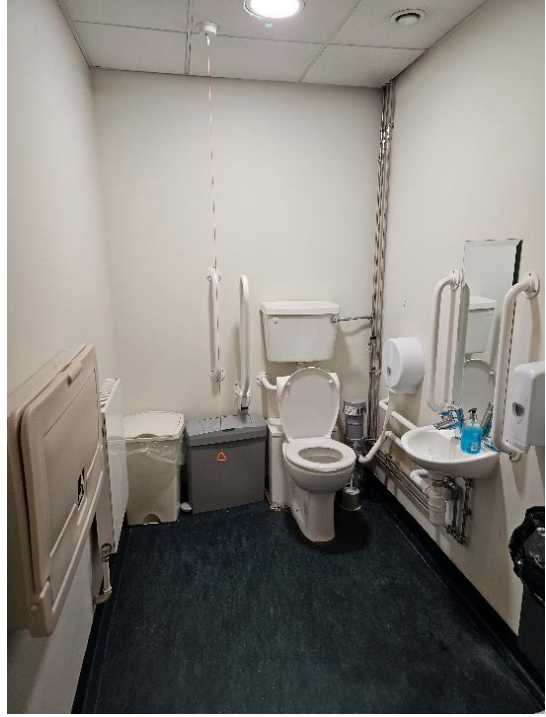
The accessible toilet contains

- 1 toilet
- Movable handles
- Assistance alarm cord
- 1 sink
- Hand towels and sanitary products

The nearest changing places toilet is at Glasgow Queen Street, West George Street, Glasgow, G1 2AF (0.25 miles from The Boardwalk). You can check for others in Glasgow City Centre on www.changing-places.org

We are actively seeking funding to have a changing places toilet installed at our building.







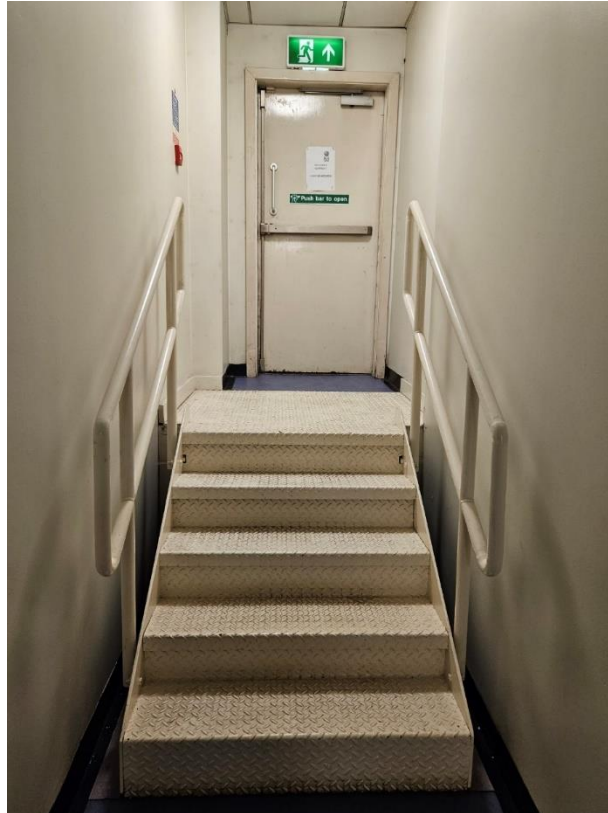
Catering Area

In the main foyer, area. This is and serve any refreshments and The Boardwalk.

Fire Exit 2

Beside the a 2nd fire exit. It is you are facing the

The fire access and is 90cm wide.



there is a catering where we prepare pre-booked cater for events at

catering area there is found to your left if catering area.

door opens inwardly There is a short

hallway leading to the fire exit door. There are 5 steps to the fire exit door. The fire exit door is 90cm wide. From the fire exit to street level, there are 14 steps.

Our Studios

Black Studio

The smaller of our theatres, this is for creating and space is fully can be used for a rehearsals, training, team showings and mention a few. A bank is available this room. enable it to be a



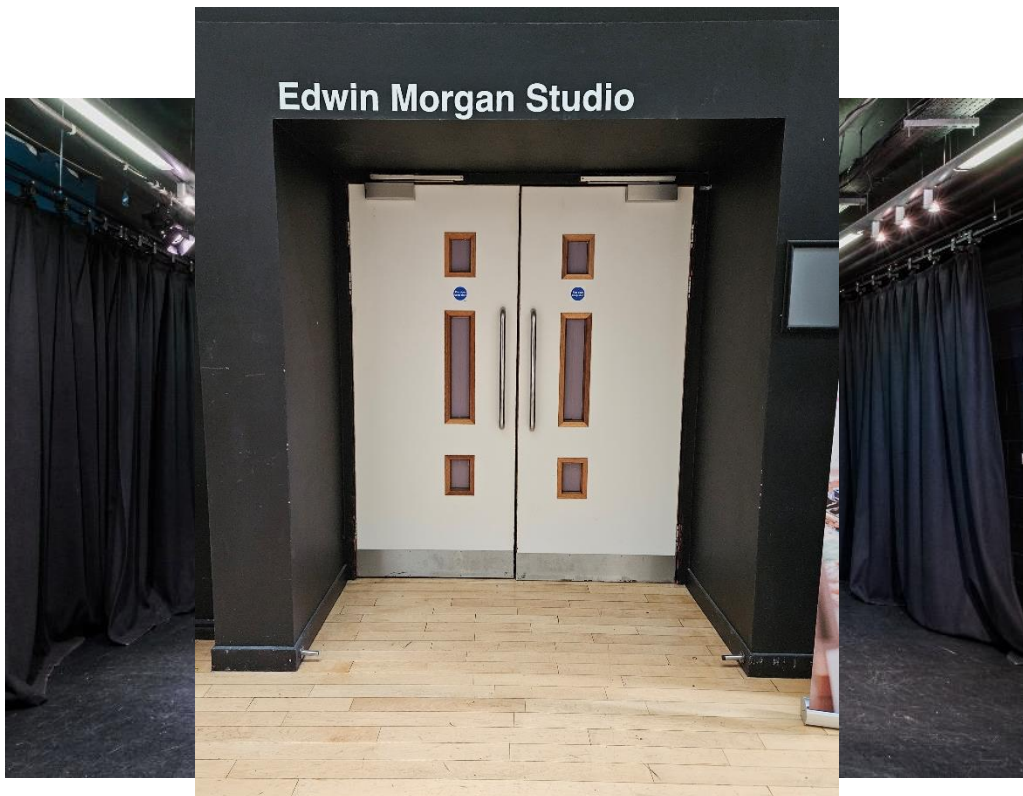
2 black box studio an exciting space performing. This adaptable and range of events – meetings, days, film castings to raked seating for assembly in Blackout curtains dark room,

allowing for the use of projectors and theatrical set ups. There is LED lighting, high windows, and theatre lighting.

To enter the studio, there are double doors that open outwardly. They are 168cm wide. There is also a door that connects the Black Studio and the Purple Room next door. This connecting door is 78cm wide.

The studio features:

- Sprung harlequin dance flooring
- Ceiling-flown theatre lighting
- Blackout drapes
- PA System
- Hearing loop
- Assistance alarm



Purple Room

The purple room is primarily a creative dance space with a full-length mirror performance wall and sprung dance flooring plus optional ballet/dance bars. As

with all of our spaces, the room is versatile and, with the use of black drapes, the mirrored wall can be covered so that the space can be used for a wide range of events.

To enter the Purple Room, there are double doors that open outwardly. They are 168cm wide.

The purple room features:

- Sprung harlequin dance flooring
- Full length mirrored wall
- Blackout drapes
- PA

System

- Hearing loop
- Assistance alarm



Green

The our multi-spaces is a space for meetings,



Room

smallest of purpose popular small

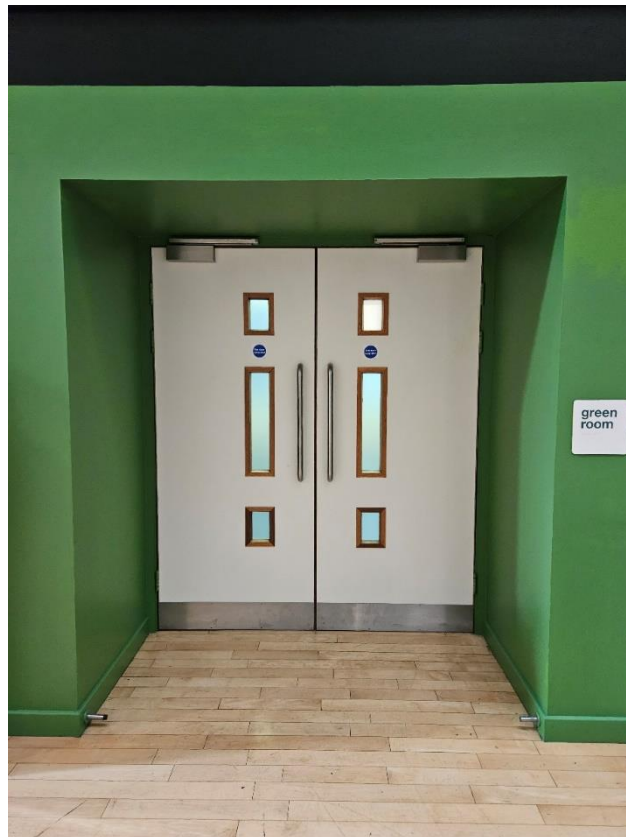
workshops, rehearsals, script development, table reads and many more. There are glass windows (with frosted effect decals) providing daylight, and plenty of LED lighting.

The double doors to the green room open outwardly and is 168cm wide.

Inside the green room, there is an interconnecting door to the adjacent silver room. It is 78cm wide. Moving from the Green Room into the Silver Room, the door opens inwardly.

The Green Room features:

- Sprung harlequin dance flooring
- Wall mounted white board
- PA System
- Hearing loop
- Assistance alarm





Silver Room

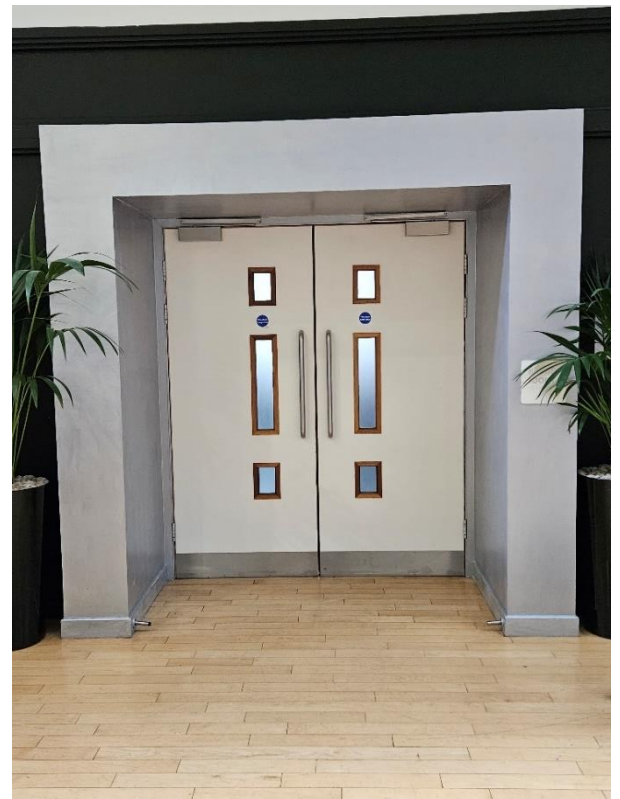
A creative multi-purpose space, the silver room is a fully accessible space which can be used for rehearsals, meetings, creative thinking, training and more. Again, there are glass windows (with frosted effect decals) providing daylight, and plenty of LED lighting.

The double door to the silver room opens outwardly and is 168cm wide.

There is also a door that connects the silver and the blue room next door. The connecting door is 78cm wide. Moving from the Silver Room into the Blue Room, the door opens inwardly.

The silver room features:

- Sprung harlequin dance flooring
- Wall mounted white board
- PA System
- Hearing loop
- Assistance alarm



Blue Room

Our Blue Room is currently hosting Impact Arts as a creative art studio part-time. This large bright space has also been used for workshops, rehearsals, meetings, training among other creative events.

The double door to the Blue Room opens outwardly and is 168cm wide.

The Blue Room features:

- Sprung harlequin dance flooring
- Wall mounted white board
- PA System
- Hearing loop
- Assistance alarm



Gold Room

Our Gold Room provides fantastic space for rehearsals, workshops, presentations, and other events. Natural lighting and warm wooden floors provide a great

environment for a range of activities.

The door to the Gold Room opens inwardly and is 90cm wide. There is a small slope into the room.

The Gold Room features:

- PA System
- Sprung wooden floor



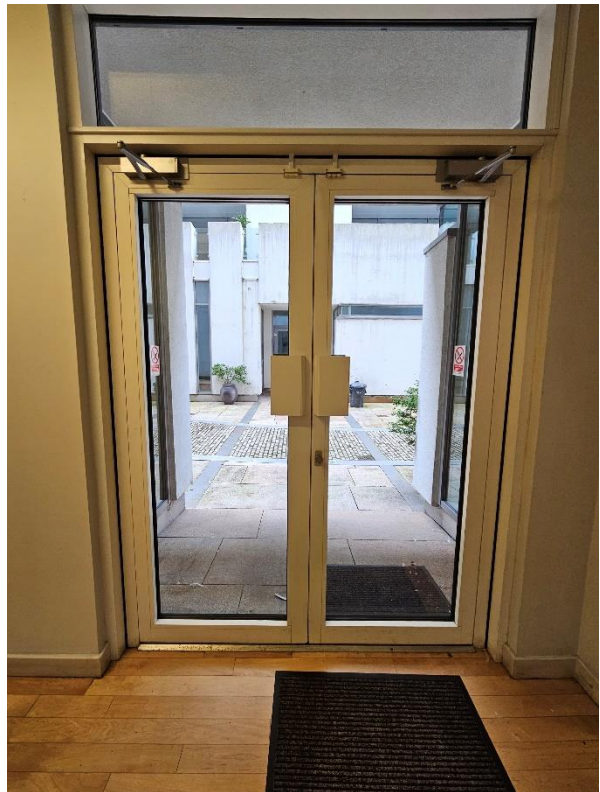
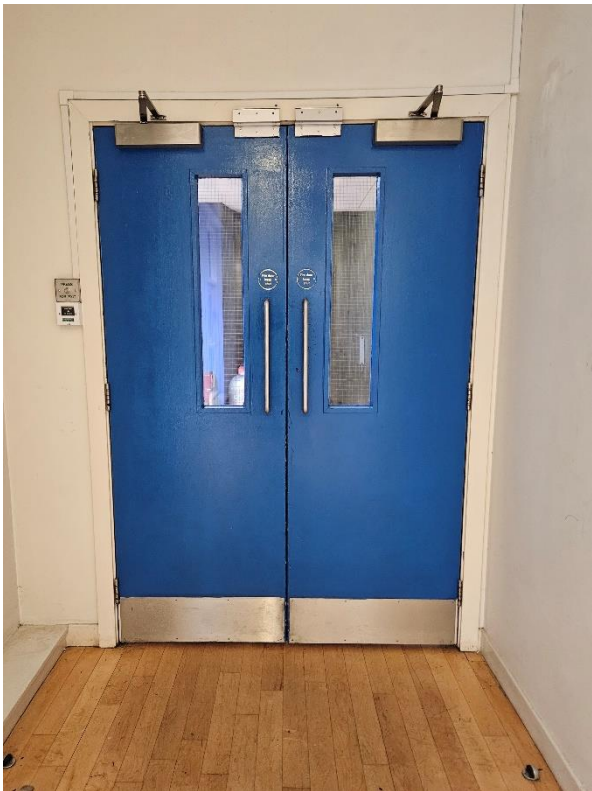
Right Corridor

The section below details additional entrances and exits along the right-side corridor. For clarity, the right side of the building features the Green, Silver, Blue Room and so on.

Along the right corridor, there are three sets of blue double doors. The blue doors are each 132cm wide. The first door opens inwardly, the two following doors open outwardly.

There is also a glass double door to the courtyard. These open inwardly and are 145cm wide.

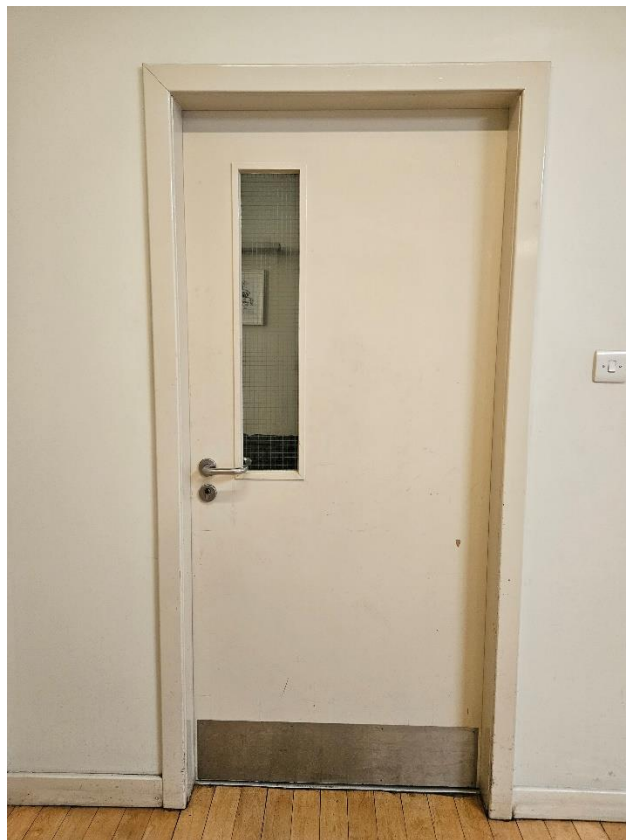
The corridor is well lit with daylight and bulb lighting.



Staff Room/Kitchen

The Boardwalk provides a staff room and kitchen primarily for the use of Impact Arts staff and its resident companies.

The door to the staff room opens inwardly and is 90cm wide.



Conference Room

The conference space for meetings. With its own air this is a comfortable, and perfectly suited to business needs.

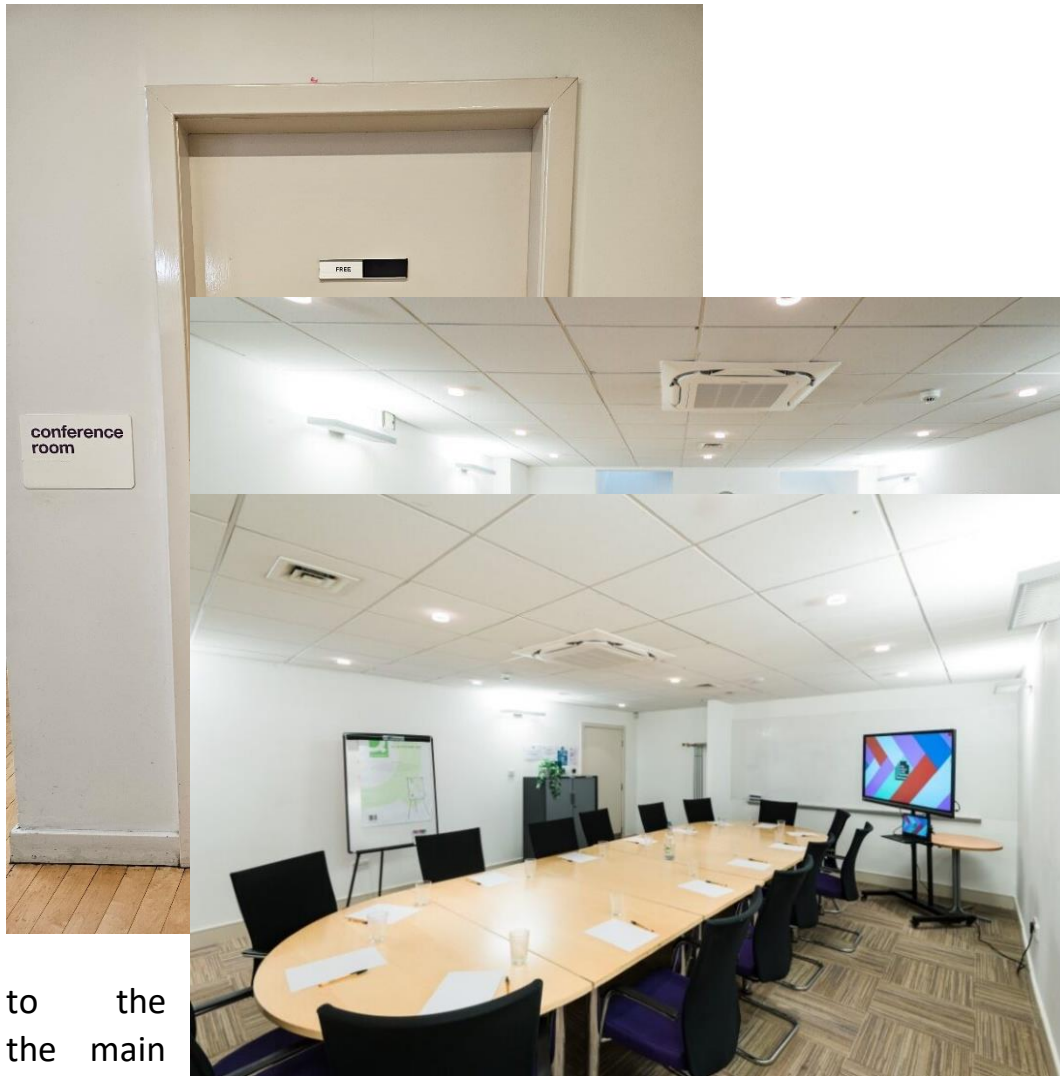
room offers great and presentations. conditioning unit, professional, practical space

The door to the room opens inwardly and is 89cm wide.

The Conference Room features:

- Air conditioning
- Wall mounted whiteboard
- Carpeted floor

- Hearing loop



to the
the main
there is

set of toilets along the right corridor.

Toilets (Right Corridor)

In addition
toilets in
foyer,
another

There is an initial door that takes you from the corridor to the toilet hallway. From the hallway, there are gender neutral toilets (one set with cubicles only and another set with urinals and cubicles), and an accessible toilet.

The initial door to the toilet hallway opens inwardly and is 84cm wide.

Accessible toilet

The door to the accessible toilet is 87cm wide. There is:

- 1 toilet

- Movable handles
- Assistance alarm cord
- 1 sink
- Hand towels and sanitary products

Female toilets

The door to the female toilets is 84cm wide.

The female toilet consists of

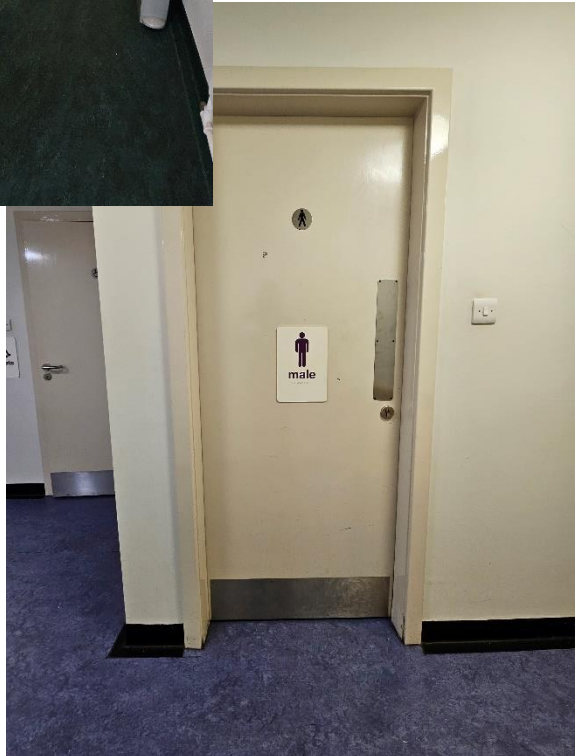
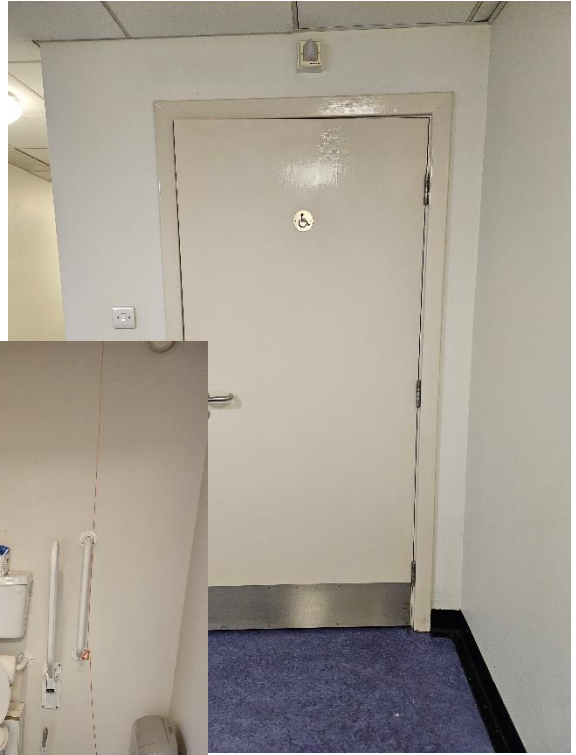
- 4 cubicles
- 4 sinks
- 1 hand dryer
- Hand towels and sanitary products

Male toilets

The door to the male toilets is 78cm wide.

The male toilet

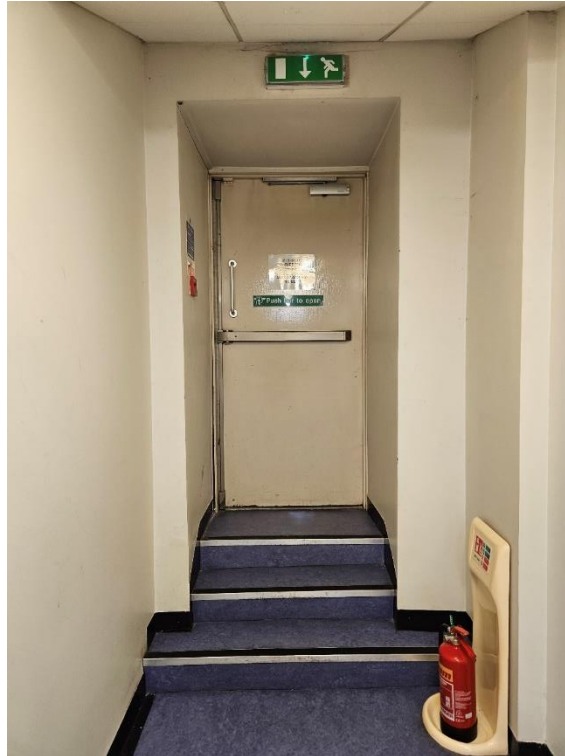
- 1 cubicle
- 4 urinals
- 3 sinks
- 1 hand dryer



Left Corridor

The section and exits along clarity, the left features the Impact Arts'

Along the left sets of blue doors are each opens door opens



below details entrances the left side corridor. For side of the building Black Studio, Purple Room, Main Office and so on.

corridor, there are two double doors. The blue 132cm wide. The first door inwardly, the following outwardly.

Along the left corridor there is a glass double door to the courtyard. These open inwardly and are 145cm wide.

The corridor is well lit with daylight and bulb lighting.



Office Spaces

As well as Impact Arts, arts organisations building: Birds of Company and Solar

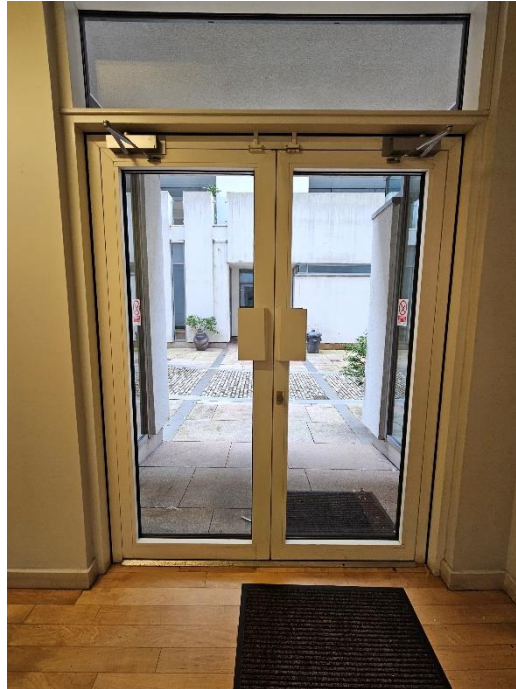
The Impact Arts main desks and is a hot desk would generally be a in this office, Monday second smaller Impact this space, for 3-4

The two doors into the office open inwardly and are each 74cm wide. The door to the second smaller office is 79cm.

The Birds of Paradise office to the left of Impact Arts' office. The door to the Bird of Paradise office opens inwardly and is 79cm wide.

Further along the left corridor is the entrance to an additional office space. The door opens inwardly and is 77cm wide.

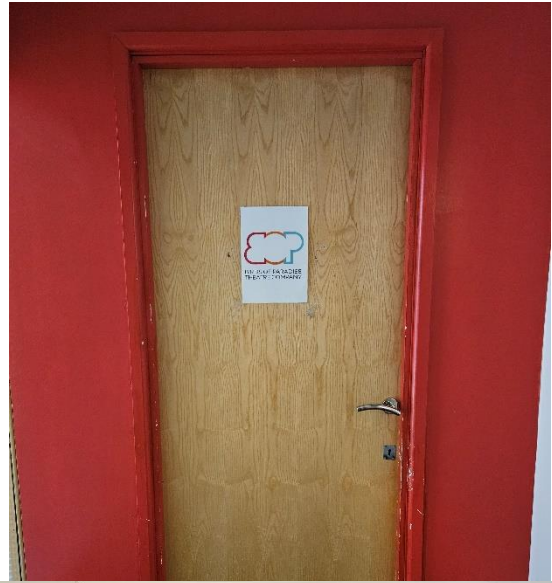
Following that is the Solar Bear office. The door opens inwardly and is 77cm wide.



there are two other currently in the Paradise Theatre Bear.

office has several style set up. There maximum of 12 people to Friday. There is a Arts office from within people.

Impact Arts main office



Fire Exit

Along the left corridor there is a door that leads to the fire escape route. The innermost door from the corridor leading to the fire exit opens inwardly and is 85cm wide. The fire exit door opens inwardly and is 94cm wide.

The fire exit opens to an outside walkway which is below street level. There are 14 steps up to the street.

At the far end of the left corridor is the server room (staff access only). The door opens inwardly and is 81cm wide.





The Boardwalk Theatre

Our black box studio theatre is an immersive intimate performance space with a fully functional lighting truss and equipment to support performances. There is an optional and moveable raked seating bank.

The theatre features:

- Sprung harlequin flooring
- Full theatre lighting
- Fully equipped technical booth
- Retractable truss
- PA system
- Projector
- Screen
- Hearing loop

There are two main entrances to the theatre, left and right. Each entrance consists of two sets of double doors, an outer and an inner door.

Left Entrance

The outer door (left) opens outwardly and is 132cm wide.

The inner door (left) opens inwardly and is 140cm wide.

Right Entrance

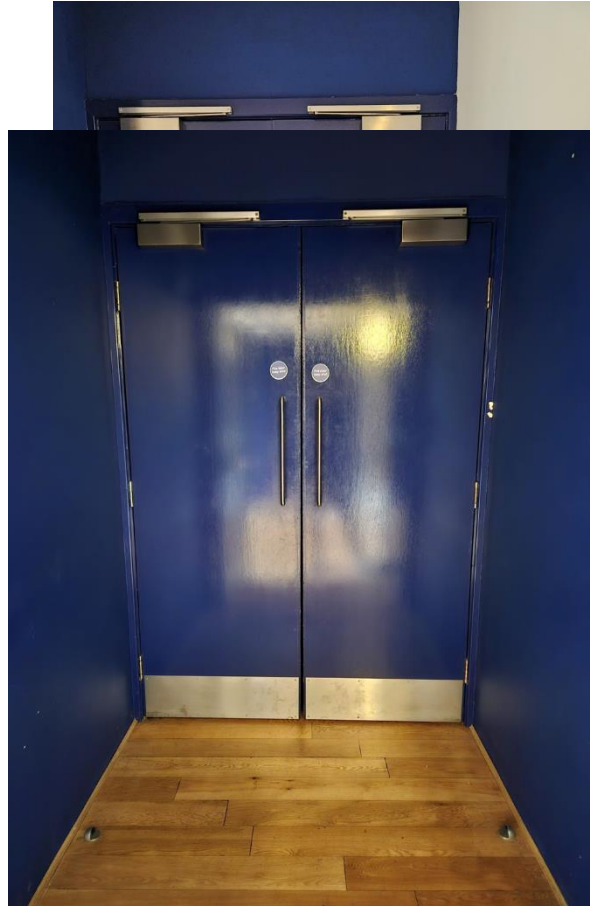
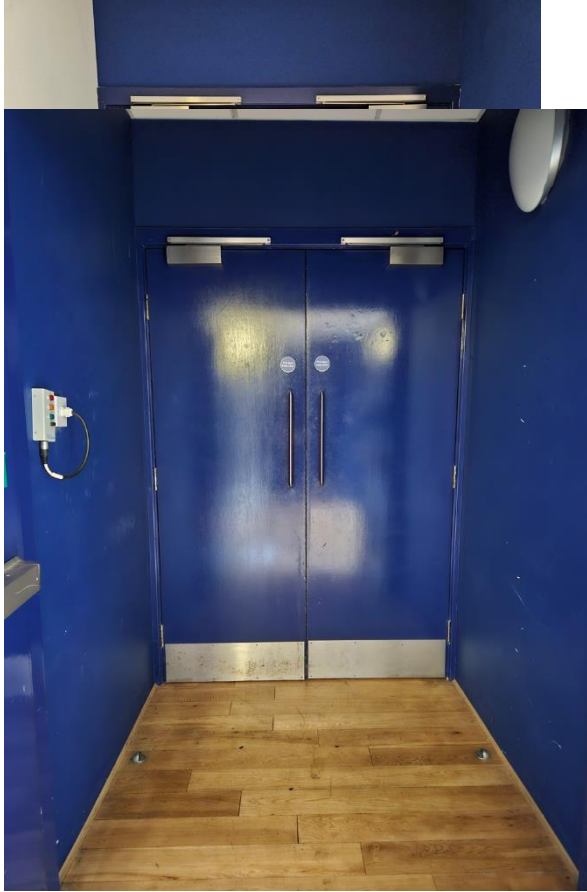
The outer door (right) opens outwardly and is 132cm wide.

The inner door (right) opens inwardly and is 140cm wide.

Stage right, there are a set of double doors that lead to the dressing rooms. The backstage doors (stage right) opens outwardly and are 168cm wide.

Stage left, there are another set of double doors that lead to the backstage space. These doors open outwardly and are also 168cm wide.





Backstage (Left Corridor)

Note: Please speak to a member of staff if you require access backstage. Please do not enter this area unassisted.

The left side door to backstage opens outwardly and is 77cm wide.

Dressing Room 1

The door to Dressing Room 1 opens inwardly and is 77cm wide.

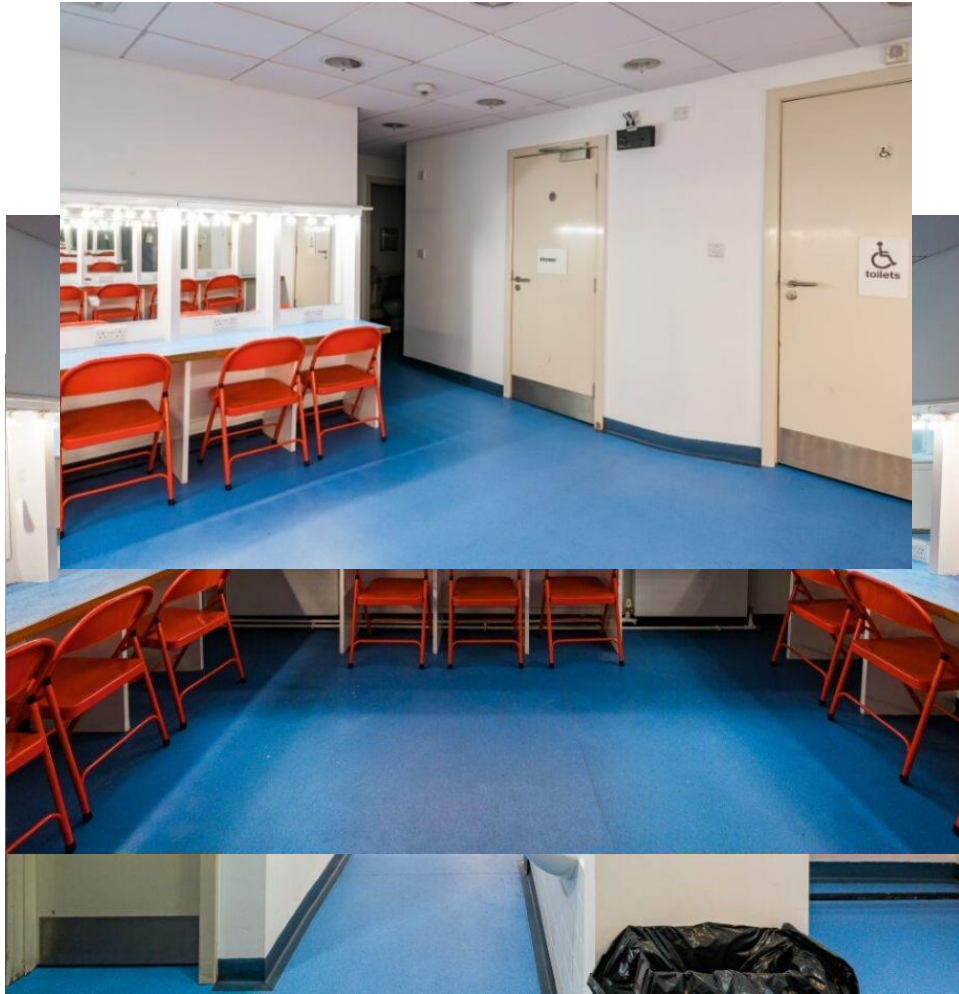
In Dressing Room 1 there are two single toilets and two single showers. One of the showers is an accessible toilet and shower room.

The toilet on the left-hand side of the dressing room is 66cm wide. The door opens inwardly.

The toilet on the right-hand side of the dressing room is 67cm wide. The door opens inwardly.

The door to the first shower room as you enter opens outwardly and is 78cm wide.

The door to the second shower room opens outwardly and is 89cm wide.



Dressing Room 2

The door to Dressing Room 2 opens inwardly and is 77cm wide.

In Dressing Room 2 there are two single toilets and two single showers. One of the showers is an accessible toilet and shower room.

The toilet on the left-hand side of the dressing room is 67cm wide.

The toilet on the right-hand side of the dressing room is 67cm wide.

The door to the first shower room as you enter opens outwardly and is 78cm wide.

The door to the second shower room opens outwardly and is 89cm wide.

Tech Store

The door to the tech store opens outwardly and is 78cm wide.

Fire exit (Backstage)

The backstage fire exit opens inwardly and is 96cm wide.

There are 5 steps up to the fire exit door.

Goods Lift

The Goods Lift is a larger lift from street level on Hutcheson Street to the basement level, backstage. The doors of the lift are 110cm wide and 200cm in height. Inside, the width of the lift is 150cm and the depth is 148cm.

The double doors to Hutcheson Street open inwardly and are 124cm wide.

Please speak to a member of staff if you require access via this lift.

Wardrobe

The door to the Wardrobe Room opens inwardly and is 78cm wide.

Backstage (Right Corridor)

Backstage is also accessible via the right corridor.

The right-side door to backstage opens inwardly and is 78cm wide.

Ground & First Floor

Lift to Ground & First Floor

To the right of the theatre is a lift that grants access to the tech booth and theatre gallery on the ground floor and to a desk space and upper gallery on the first floor.

The door to the lift is 78cm wide and 200cm in height. From inside, the width is 140cm and 110cm in depth.

Ground Floor

Ground floor is accessible via a lift or steps. There are 22 steps up to the ground floor.

On the ground floor there is a tech booth to operate theatre lights and sound. The door to the tech booth opens inwardly and is 78cm wide.

The ground floor also provides access to the gallery above the stage space. The door to access the gallery opens inwardly and is 76cm wide. The gallery walkway is 120cm wide.

First Floor

From basement level floor to the first floor, there are 46 steps.

On the first floor, there is a corridor and a desk space. The corridor to access the desk space is 107cm wide.

The first floor also provides access to the upper gallery. The door to the upper gallery is 78cm wide. The upper gallery walkway is 117cm wide.





Courtyard

The courtyard is a long outdoor space with outdoor seating, great for fresh air at breaktimes or as a summer exhibition or networking space.

Along the left and right corridors there are glass double doors to the courtyard. These open inwardly and are 145cm wide.

The courtyard is also accessible via the main foyer (near the lift). These double doors are 168cm wide and open inwardly.

The courtyard is wheelchair accessible. There is a single step at each end of the courtyard, but with a ramp to the side.

Please be aware that the paved and cobbled ground of the courtyard can become slippery in wet weather.

Thank you for taking the time to read the access notes for The Boardwalk.
 If you have any questions, please get in touch.

Full List of Door Measurements (Width, CM)

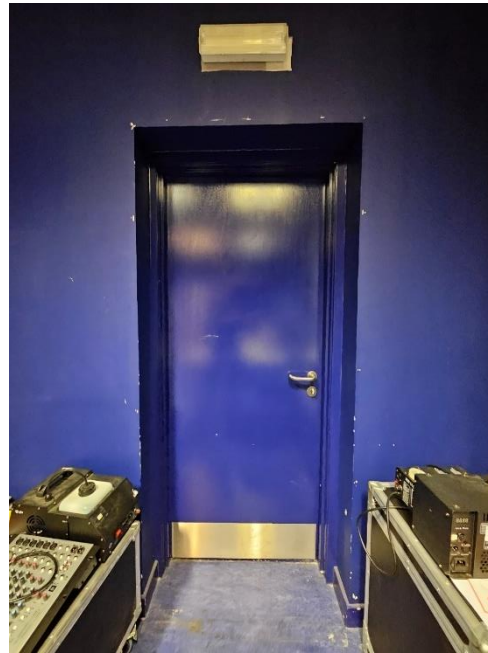
Door	Width (CM)
Impact Arts Main Office	74
BOP	79
Left Corridor Blue Doors	132
Double Door to Courtyard	145
Additional Office (Unoccupied)	77
Solar Bear Office	77
Fire Escape (Nearest Solar Bear) Inner	85
Fire Escape (Nearest Solar Bear) Outer	94
Server Room	81
Alcove	81
Backstage Access (Left Corridor)	77
Dressing Room 1 (DR1)	77
DR1 Toilet (Left)	66
DR1 Toilet (Right)	67
DR1 Shower 1	78

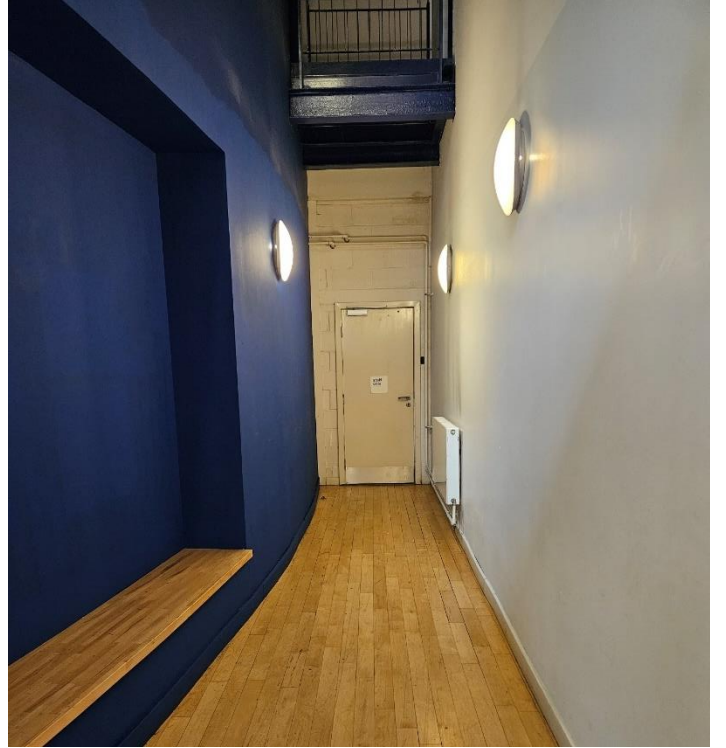
DR1 Shower 2 (Accessible)	89
DR1 Sink Corridor	102
DR2 Dressing Room 2	77
DR2 Toilet (Left)	67
DR2 Toilet (Right)	67
DR2 Shower 1	78
DR2 Shower 2 (Accessible)	89
DR2 Sink Corridor	102
Backstage Theatre Doors	168
Tech Store	78
Stair door (?)	102
Backstage Fire Exit (5 steps)	96
Goods Lift	110
Outer Door (From goods lift)	124
Wardrobe Door	78
Backstage Access (right)	78
Theatre, outer door (right)	132
Theatre, inner door (right)	140
Theatre, outer door (left)	132
Theatre, inner door (left)	140
Lift (by theatre)	78
Tech booth (ground floor)	78
Gallery Access	76
Gallery Walkway	120
First Floor Corridor	107
Upper Gallery	78
Upper Gallery Walkway	117
Right Corridor Blue Doors	132
Toilet Door (RC)	84
Toilet Door (F)	78
Accessible Toilet	87
Toilets Door (M)	78
Fire Exit (RC)	92
Conference Room	89
Staff Kitchen	90
Gold Room	90

Blue Room	168
Silver Room	168
Green Room	168
Blue to silver	78
Silver to green	78
Fire Access (left of café)	90
Toilet Corridor (foyer)	86
Fire Escape (5 steps)	90
Toilet Door (Gender Neutral)	77, 77
Accessible Toilet	88
Toilet Door (M)	77, 77
Edwin Morgan	168
Purple Room	168
Reception Lift	78
Courtyard Access (foyer)	168
Reception	168

Full List of Steps

Area	No. of Steps
Reception to foyer	21
1. Fire exit (right of café, past GN/M toilets)	5
2. Fire exit (left of café, past boiler room)	5
3. Fire exit (right corridor, past M/F toilets)	3
4. Fire exit (backstage)	5
Fire exit 1 to street	16
Fire exit 2 to street	14
Fire exit 3 to street	15
Fire exit 4 to street	Unknown
Accessible fire exit to street	14
To tech booth	22
Basement to First Floor Level	46









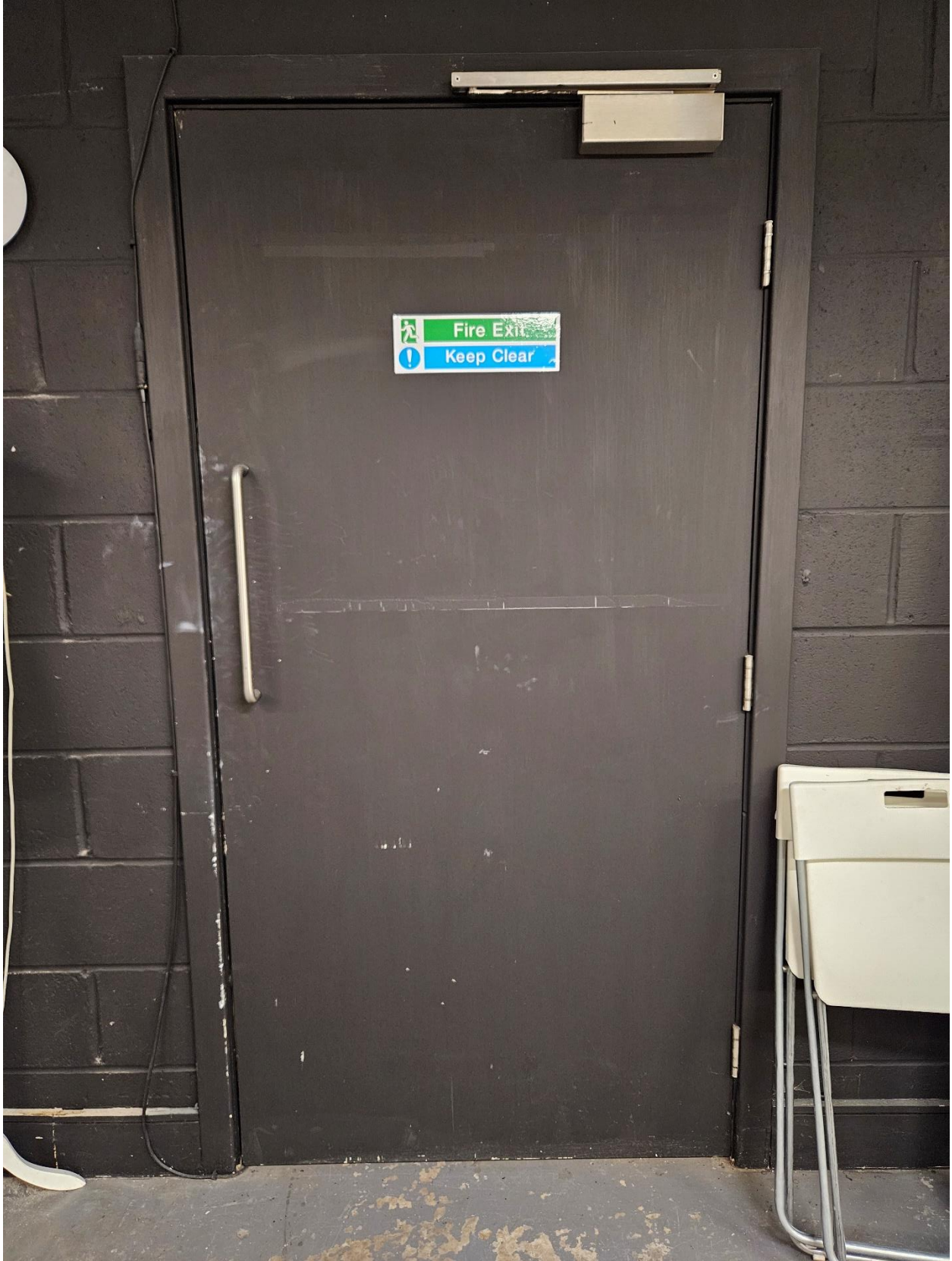


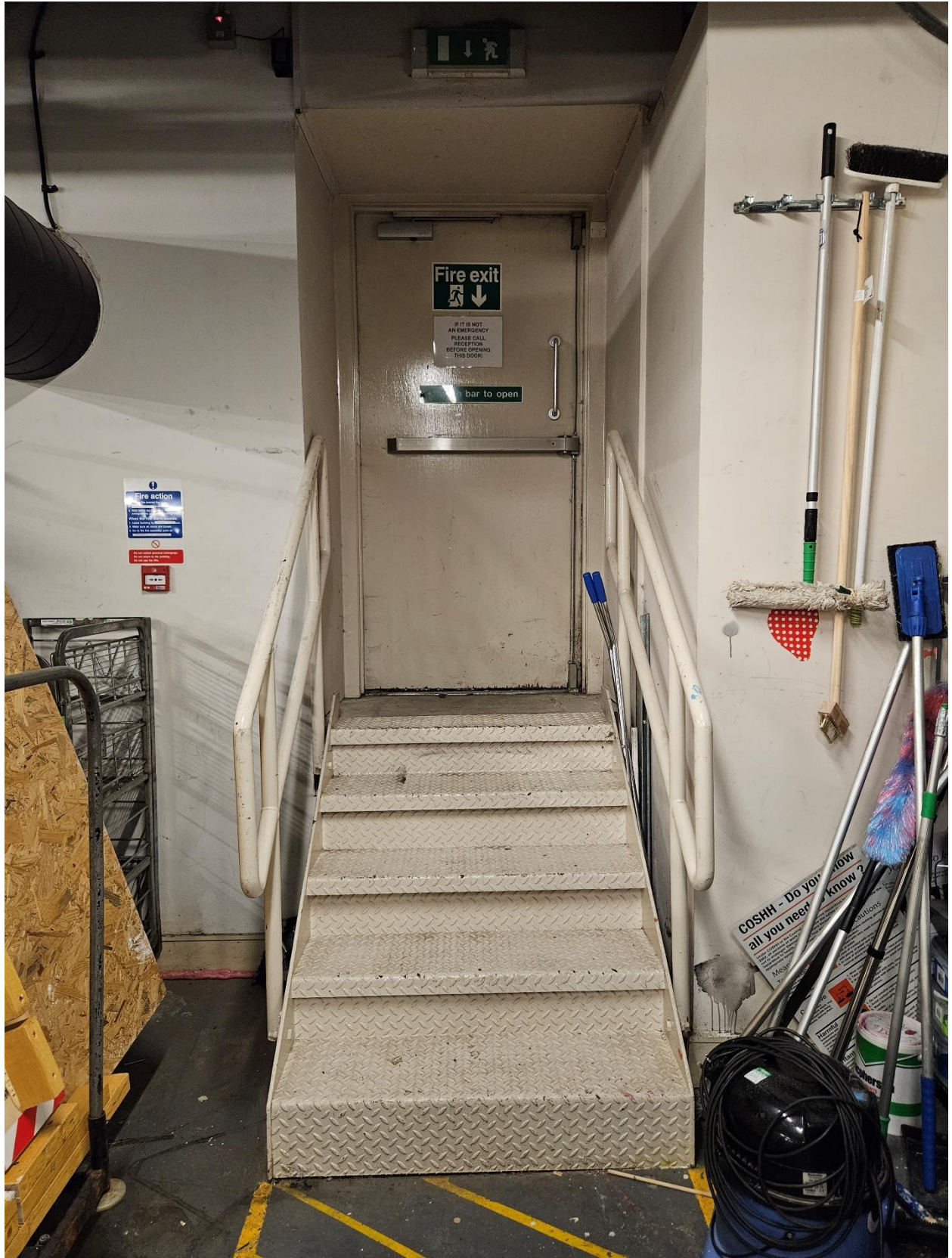


shower











CUSHH - D all you need

Under COSHH or the Control of Substances Hazardous to Health (COSHH) 2002, all persons at work need to know not to endanger themselves or others. Below are four of the most common hazard categories, their meaning and appropriate symbols, their meaning and

Meaning

Toxic / Very Toxic

1. Wear eye protection
2. After plenty of rest
3. In case of contact with skin, wash with plenty of water
4. In case of contact with eyes, rinse immediately with plenty of water and seek medical advice



Corrosive

1. Wear eye protection
2. Take off contaminated clothing immediately
3. In case of contact with skin, wash with plenty of water for 15 minutes
4. In case of contact with eyes, rinse immediately with plenty of water and seek medical advice



Harmful

1. Do not breathe vapours or dusts
2. Avoid contact with skin
3. Wash thoroughly after use
4. In case of contact with skin, wash with plenty of water



Irritant

1. In case of contact with skin, wash with plenty of water
2. In case of contact with eyes, rinse immediately with plenty of water and seek medical advice
3. Do not breathe vapours or dusts
4. Avoid contact with skin



wardrobe





